

REMBRANDT  
BY ROS WILSON



Curves 2 is the second collection from Ros Wilson for Artesano. 12, thoughtful designs to flatter women in sizes 16-24.



Our thanks to Beale Park of the Child Beale trust for the use of their facilities for the purposes of this photo shoot.

Beale Park, Lower Basildon, Berkshire  
RG8 9NH  
[www.bealepark.co.uk](http://www.bealepark.co.uk)

There are now 28 patterns available in the Curves range. For more details of the collection and to find your nearest stockist please visit our website [www.artesanoyarns.co.uk](http://www.artesanoyarns.co.uk) or call us on 0118 9503350

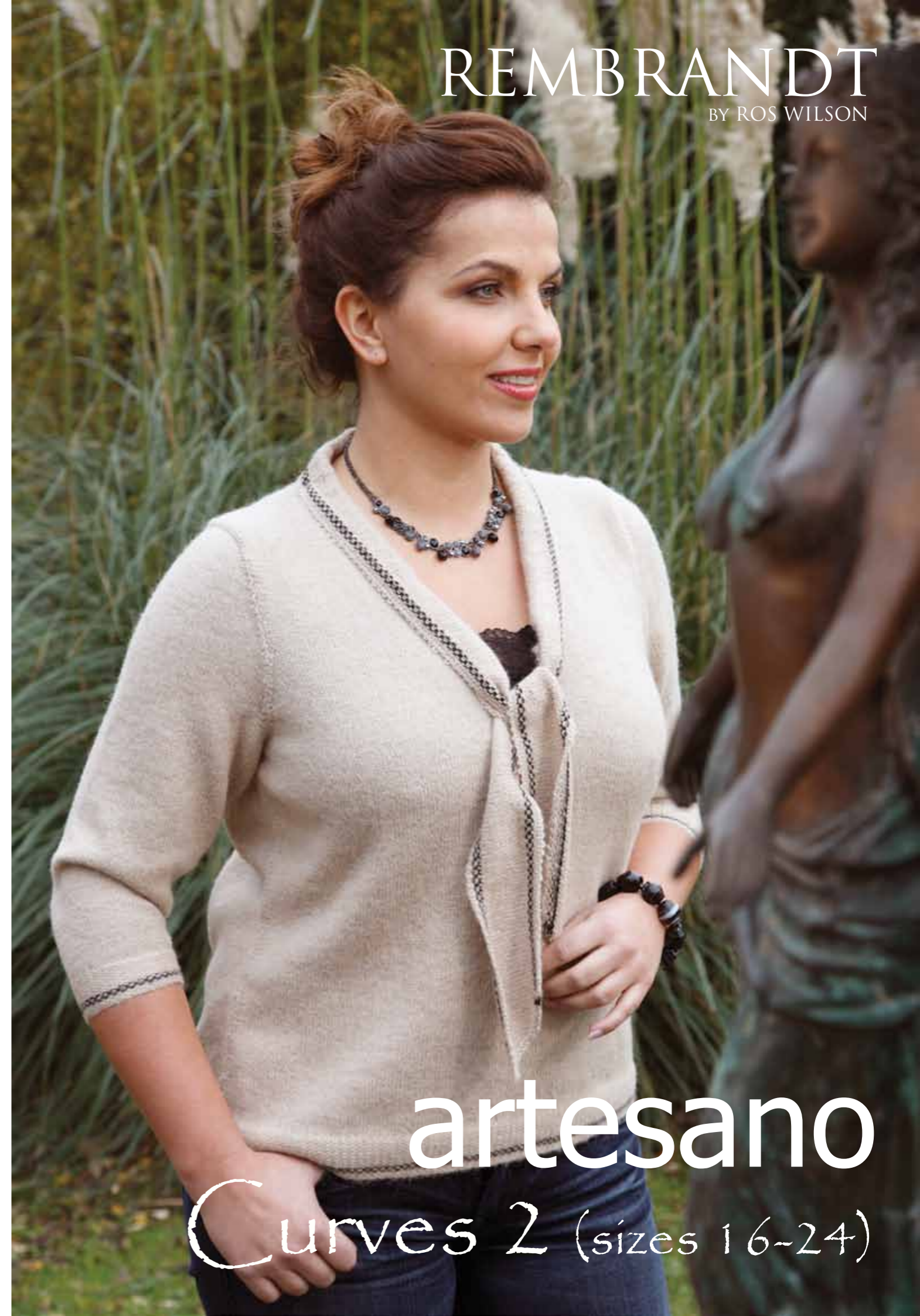
Credits: Knitwear Design by Ros Wilson for Artesano Ltd.

Graphic Design by Artesano Ltd.

Styling by Fern Spooner and Sue Coomber

Photography by David Hatfull of Diem Photography.

© Artesano Ltd. 2008. These patterns are sold on the understanding that they should not be knitted for re-sale



artesano  
Curves 2 (sizes 16-24)



**There's nothing like natural shades of Alpaca to give real style and drape to this classic sweater. Three-quarter length sleeves and a flattering tie neck will make this a perennial favourite in your wardrobe. You may want to change the contrast colour to match your favourite garment.**

**To fit Bust:** 97[102:107:112:117] cm  
38.2(40.2, 42.1, 44.1, 46.1)''  
**You will need:**

Artesano Superfine Alpaca 4 ply  
Main Colour: 8[9:10:11:11] x 50 gm balls in Biscuit (shade SFN21)  
Contrast Colour: 1 x 50 gm balls in Liquorice (shade SFN50)  
Pair of 2.75mm needles  
80cm long 4mm circular needle  
80 cm long 2.75mm circular needle  
Spare needle – size 2.75 or less.  
4 stitch holders  
6 stitch markers or lengths of contrasting thread.

Note: Yarn amounts given are based on average requirements and are approximate.

#### Tension:

31 sts and 38 rows to 10cm over in stocking stitch using 2.75mm needles. Use larger or smaller needles if necessary to obtain correct tension.

#### Abbreviations:

**St(s)** = Stitch(es)

**K** = knit

**P** = purl

**St st** = stocking stitch (one row K one row P when working backwards and forwards or every row K in circular knitting)

**RS** = right side of garment

**WS** = wrong side of garment

**MC** = Main Colour

**CC** = Contrast Colour

**Dec 1** = K or p the next two stitches together

**Mk1** = create a new stitch by knitting or purling into the loop below the next st.

**Inc 1** = increase by knitting or purling twice into the next stitch.

**Yf** = bring yarn to the front of the work between needles

**Yb** = take yarn to the back of the work between needles.

**Sl 1** = slip next stitch from one needle to the other without knitting

**PSSO** = pass slipped stitch over the stitch just knitted/purled

#### Back

□

#### Hem

With the 4mm circular needle and MC cast on 175[183:191:201:209] sts.

Working backwards and forwards on this needle, create hem in 'Tweed' stitch as follows, (pay attention that you do slip the slip stitches to keep smoothness of pattern):

**Tweed Stitch Row 1 (Right Side):** K1, \*yf, sl 1 purlwise, yb, K1; repeat from \* to end.

Tweed Stitch Row 2: P2, \*yb, sl 1 purlwise, yf, P1; repeat from \* to last st, P1

**Repeat these rows once more.**

Change to CC and work the two pattern rows.

Change back to MC and repeat the two row pattern 7 times more.

#### Work Tweed Stitch Row 1 once more.

Change to 2.75mm needles and work Tweed Stitch Row 2.

#### Main Body

Continue in St St, starting with a knit row, and work 60 rows, decreasing at each end of every 15th row, ending with a purl row (167[175:183:193:201] sts).

Work 45 rows, increasing 1 st at each end of every 15th row (173[181:189:199:207] sts).

Now work straight until back measures 39[40:41:42:43] cm, ending on a purl row. □

#### Back Armhole shaping

Continue in st st as follows:

Cast off 8[8:9:9:9] sts at the beginning of the next two rows (157[165:171:181:189] sts).

Work 10 rows, decreasing 1 st at each end of each row (137[145:151:161:169] sts).

Work 20[22:24:26:28] rows, decreasing 1 st at each end of every knit row (117[123:127:135:141] sts).

Work straight until back measures 22[23:24:25:26] cm from beginning of armhole shaping, ending with a purl row.

#### Back Neck Shaping

Next row: K47[50:51:54:57], cast off 23[23:25:27:27], K47[50:51:54:57].

Working on this last set of 47[50:51:54:57] sts, continue shaping as follows:

**Next row:** Purl.

**Next row:** Cast off 10[12:12:14:16] sts, K to end (37[38:39:40:41] sts)

**Next row:** Purl

**Next row:** Cast off 8 sts, K to end (29[30:31:32:33] sts)

**Next row:** Purl to last 2 sts, P2tog (28[29:30:31:32] sts)

**Next row:** knit

Transfer these stitches to a stitch holder.

Transfer remaining 47[50:51:54:57] stitches to the other needle and with RS facing. Work shaping as follows.

**Next row:** Knit

**Next row:** Cast off 10[12:12:14:16] sts, purl to end. (37[38:39:40:41] sts)

**Next row:** Knit

**Next row:** Cast off 8 sts, purl to end. (29[30:31:32:33] sts)

**Next row:** K to last 2 sts, K2tog (28[29:30:31:32] sts)

**Next row:** Purl

Transfer these stitches to a stitch holder.

#### Front

Work as Back from □ to □

(173[181:189:199:207] sts).

#### Front Armhole and V-Neck Shaping

**Row 1:** Cast off 8[8:9:9:9] sts, K76[80:83:88:92], P5, K84[88:92:97:101] (165[173:180:190:198] sts)

**Row 2:** Cast off 8[8:9:9:9] sts, P76[80:83:88:92], K5, P76[80:83:88:92] (157[165:171:181:189] sts)

**Row 3:** K2tog, K74[78:81:86:90], P5, K74[78:81:86:90], K2tog

(155[163:169:179:187] sts)

**Row 4:** P2tog, K73[77:80:85:89], K5, K73[77:80:85:89], P2tog (153[161:167:177:185] sts)

**Row 5:** K2tog, K70[74:77:82:86], K2tog, P1, Sl1, P1, PSSO, start a second ball of yarn, P2, Sl1, K1, PSSO, K70[74:77:82:86], K2tog (148[156:162:172:180] sts)

From this point onward you will have one ball of yarn for the left side of the neck and one for the right. Keep the two balls separated and do not allow to cross. The change from one ball to another is indicated with // **Row 6:** P2tog, P70[74:77:82:86], K2//K2, P70[74:77:82:86], P2tog (73[77:80:85:89] sts each side).

**Row 7:** K2tog, K67[71:74:79:83], K2tog, P2//P2, Sl1, K1, PSSO, K67[71:74:79:83], K2tog 71[75:78:83:87] sts each side.

Row 8: P2tog, 67[71:74:79:83], K2//K2, 67[71:74:79:83], P2tog. (70[74:77:82:86] sts each side)

Repeat rows 7 and 8 2[2:2:3:3] times more (64[68:71:73:77] sts each side)

Now work 20[22:24:26:28] rows, decreasing 1st at armhole edge on each knit row, whilst keeping continuity of the two stitches on either side of the V-neck edge and at the same time working the V neck decreases (as shown below) on every 3rd row:

When neck decrease falls on knit row: K2tog at armhole edge, work to 4 sts before neck edge, K2tog, P2//P2, Sl1, K1, PSSO, work to last 2 sts, K2tog.

When neck decrease falls on purl row: Work to 4 sts before neck edge, P2tog, K2//K2, Sl1 purlwise, P1, PSSO, work to end.

(48[50:51:52:54] sts each side)

Now keeping the armhole edges straight, continue decreasing at neck edge on every 3rd row until 28[29:30:31:32] sts remain on each side.

Measure front from start of armhole shaping. If necessary work straight until Front measures 23.5[25:26:27:28] cm from start of armhole shaping.

Slip remaining sts onto stitch holders.

#### Sleeves (knit both at once)

With 4mm circular needle and MC, cast on 77[81:85:87:89] sts. With a second ball of yarn, cast on a second set of 77[81:85:87:89] sts.

You will be working backwards and forwards on the circular needle. The instructions will be given for the first set of stitches and should be repeated across the second set of stitches.

#### Work Tweed Stitch hem as follows:

Tweed Stitch Row 1 (Right Side): K1, \*yf, sl 1 purlwise, yb, K1; repeat from \* to end.

Tweed Stitch Row 2: P2, \*yb, sl 1 purlwise, yf, P1; repeat from \* to last st, P1

Repeat these rows once more.

Change to CC and work the two pattern rows.

Change back to MC and repeat the two row pattern 7 times more.

Work Tweed Stitch Row 1 once more.

Change to 2.75mm needles and work Tweed Stitch Row 2.

Continue working in St St, starting with a Knit row, work 21 rows, increasing 1 st at each end of every 3rd row (91[95:99:101:103] sts).

Continue in St St, increasing at each end of every 4th[4th:4th:4th:3rd]row until there are 127[133:139:145:151] sts.

Work straight until sleeve measures 31[32:33:34:35]cm, ending with a purl row.

#### Sleeve top shaping

Cast off 8[8:9:9:9] sts at the beginning of the next two rows (111[117:121:127:133] sts).

Work 8[10:10:10:10] rows, decreasing 1 st at each end of each row (95[97:101:107:113] sts).

Work 6[8:8:8:10] rows, decreasing 1 st at each end of knit rows (89[89:93:99:103] sts).

Work 15[15:15:18:18] rows, decreasing 1 st at each end of every 3rd row (79[79:83:87:91] sts).

Work 24 rows, decreasing 1 st at each end of every knit row (55[55:59:63:67] sts).

Work 8[8:10:10:12] rows, decreasing 1 st at each end of each row (39[39:39:43:43] sts).

Cast off remaining sts.

#### Tie collar

With 4mm circular needle and MC cast on 399 sts using the thumb method.

Continue with collar as follows:

□

**Collar Tweed Row 1:** K1, sl 1, K1, PSSO, \*yf, sl 1 purlwise, yb, K1; repeat from \* to last 2 sts, Ktwice into next st, K1.

**Collar Tweed Row 2:** P1, \*yb, sl 1 purlwise, yf, P1; repeat from \* to end.

Break off MC, leaving a 'tail' to sew in later.

Change to CC and work the following two

rows.

**Collar Tweed Row 3:** K1, sl 1, K1, PSSO \*K1, Yf, sl 1 purlwise, yb; repeat from \* to last 2 sts, K twice into next st, K1.

**Collar Tweed Row 4:** P2, \*yb, sl 1 purlwise, yf, P1; repeat from \* to last st, P1.

Break off CC yarn, leaving a 'tail' for sewing in later.

Change to MC and knit Collar Tweed row 1, joining in yarn as before.

Change to 3.25mm circular needle and work Collar Tweed row 2.

□

Now continue in St st as follows:

Collar St st row 1: Sl1, K1, PSSO, K to last st, Mk1 by knitting into the loop below the next st, K1.

Collar St st row 2: Purl.

Repeat these rows 8 more times.

Change to 4mm circular needle and work from □ to □ once more. Cast off loosely. Sew in ends as invisibly as possible on the wrong side.

#### Making up

Block each piece to the dimensions shown below and press from the wrong side in accordance with ball band instructions. Press the scarf collar firmly from the wrong side.

#### Shoulder Seams

Transfer the stitches from Right Front shoulder stitch holder onto one of the 3.25mm needles with the point towards the neck. Transfer the stitches from the Right Back shoulder stitch holder to the second 3.25mm needle in the same way, also with point towards neck.

With right sides together and the needles parallel, create shoulder seam as follows:

Hold the pair of needles with the two sets of stitches in the left hand and take the spare needle in the right hand.

Push the point of the spare needle through the first stitch on each needle.

Knit this stitch onto the spare needle, taking care when easing the two stitches off the left needles.

\*\*Push the spare needle through the next two stitches and knit onto right hand needle.

Pass the first stitch over the second stitch (as per normal cast off).\*\*

Repeat from \*\* to \*\* until there is only one stitch on the right hand needle. Break yarn and pass through this last stitch.

#### Scarf collar

Measure 5 cm up from the start of the V-neck and place a contrasting thread at this point at the neck edge on each side. Fold the scarf collar in half so that the bottom edges of the two points are level. Mark the centre point of the scarf collar with a contrasting thread on the cast off edge. Measure the back neck edge and place a contrasting thread in the centre.

Turn the garment inside out. With the right side of the scarf collar against the wrong side of the garment, pin the final cast-off edge of the collar to the neck opening,

matching the back neck stitch markers and stopping at the front edge markers. Before stitching, turn the collar to the right side and put the garment on a hanger to check that the neck is sitting correctly.

Stitch the collar into place using loose back stitch, ensuring that the cast off edge of the collar is contained within the seam. Remove markers.

#### Sleeves

With right sides together, pin and stitch sleeve tops into the armholes. Press seams from wrong side with the tip of a cool iron.

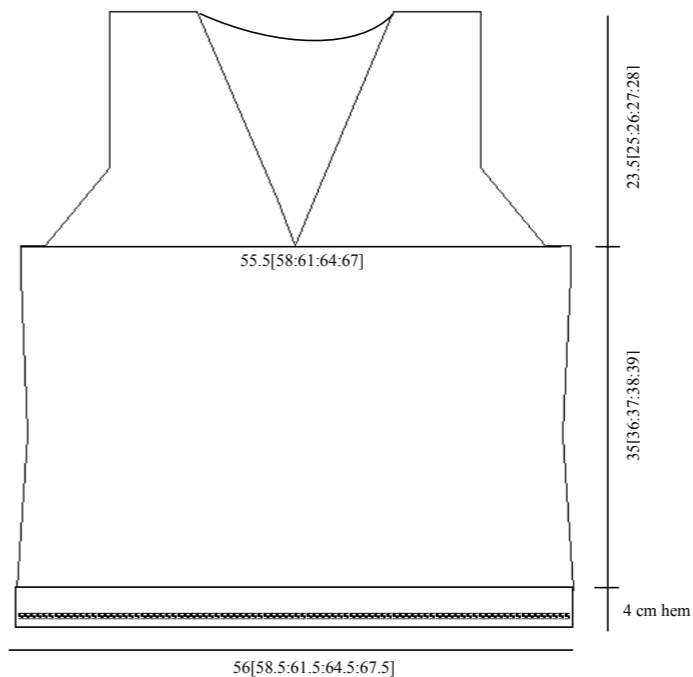
#### Underarm Seams

With right sides together, pin and stitch side seam from hem to armhole, taking care to match up the contrast detail at hem. Pin and stitch sleeve seams in the same way. Press underarm seams from wrong side with the tip of a cool iron.

Tie the ends of the scarf collar together over the lowest point of the V neck. Chic!

## Garment Dimensions in cm

### Front and Back



### Sleeves

