

SUMMER
ROMANCE
BY ROS WILSON



Curves is a new collection of flattering designs for women sizes 16-24. This patterns should be knitted using Artesano 4ply Superfine Alpaca

There are 16 patterns available in this range. For more details of the collection and to find your nearest stockist please visit our website www.artesanoyarns.co.uk or call us on 0118 9503350

Credits: Knitwear Design by Ros Wilson for Artesano Ltd.

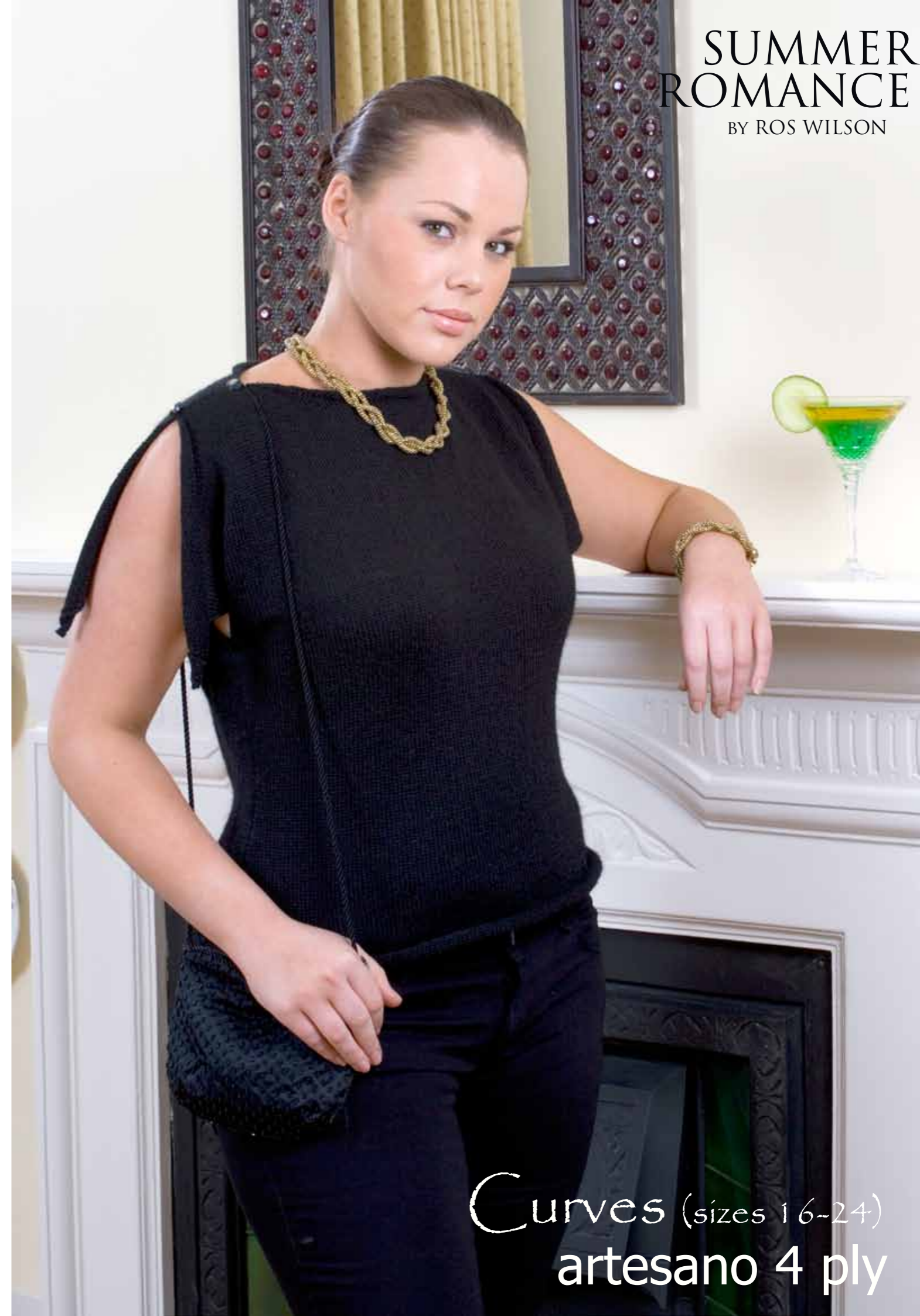
Graphic Design by Artesano Ltd.

Styling by Sue Coomber

Model - Amy Steed of Plush Models

Photography by David Hatfull of Diem Photography.

© Artesano Ltd. 2008. These patterns are sold on the understanding that they should not be knitted for re-sale



Curves (sizes 16-24)
artevano 4 ply

SUMMER ROMANCE

BY ROS WILSON

Easy to knit and a dream to wear. This evening top has draped open sleeves and a flattering boat neck with button detail.

Sizes:

16[18:20:22:24]
To fit bust
102[107:112:117:122]cm
(40[42:44:46:48]ins)

Yarn

Artesano 4 Ply 100% Pure Super-fine Alpaca
5[5:6:6:6] 50 gm balls in shade Liquorice (code SFN50)

3.25 mm circular needle
4 stitch markers or contrasting pieces of thread.
4 small, smooth-surfaced black buttons.

Note: Yarn amounts given are approximate.

Tension:

25 sts and 34 rows to 10cm over stocking stitch using 3.25mm needle. Use larger or smaller needles if necessary to obtain correct tension.

Abbreviations:

St(s) = Stitch(es)
K = knit
P = purl
St st = stocking stitch (one row K, one row P)
RS = right side of garment
WS = wrong side of garment
Dec 1 = decrease 1 st by knitting or purling next two sts together.
Inc 1 = increase by knitting or purling twice into the next st.

Front and Back

Knit both at once
With 3.25mm circular needle cast on 144[152:160:166:174] sts. Start a second ball of yarn

and cast on a second set of 144[152:160:166:174] sts. Work each set of stitches according to the following instructions.

Working in stocking stitch throughout, dec 1 at each end of every 8th row until 130[136:142:150:156] sts remain. Work 14[18:20:20:22] rows straight.

Inc 1 at each end of the next and following 14th[15th:18th:20th:22nd] row (134[140:148:154:160] sts.)

Continue straight until work measures 34[35:37:39:40.5] cm, ending with a P row. Place a stitch marker or contrasting thread at each end of row.

Draped sleeve shaping

and Neck Edge

Increase 1 st at each end of the next and every following K row until there are 214[224:234:246:258] sts.

P 1 row.

Cast off very loosely.

Finishing the Garment

With right sides together, pin and stitch the side seams from hem to the stitch marker. With a cool iron press garment and seams from the wrong side.

With wrong sides together, measure a neck opening of 27[27:28:28:29] cm as shown on the dimension diagram. Pin and stitch shoulder seam of 8[8:9:9:10] cm on either side of the neck opening, over stitching the seam several times at the beginning and end for reinforcement.

With RS facing and using cotton thread to match the colour of the garment, sew a button at each end of the shoulder seam on each side.

The sleeve openings, hems and boat neckline will curl to form a relaxed finish to the top.

Wear with evening trousers and big jewellery for extra bling.

